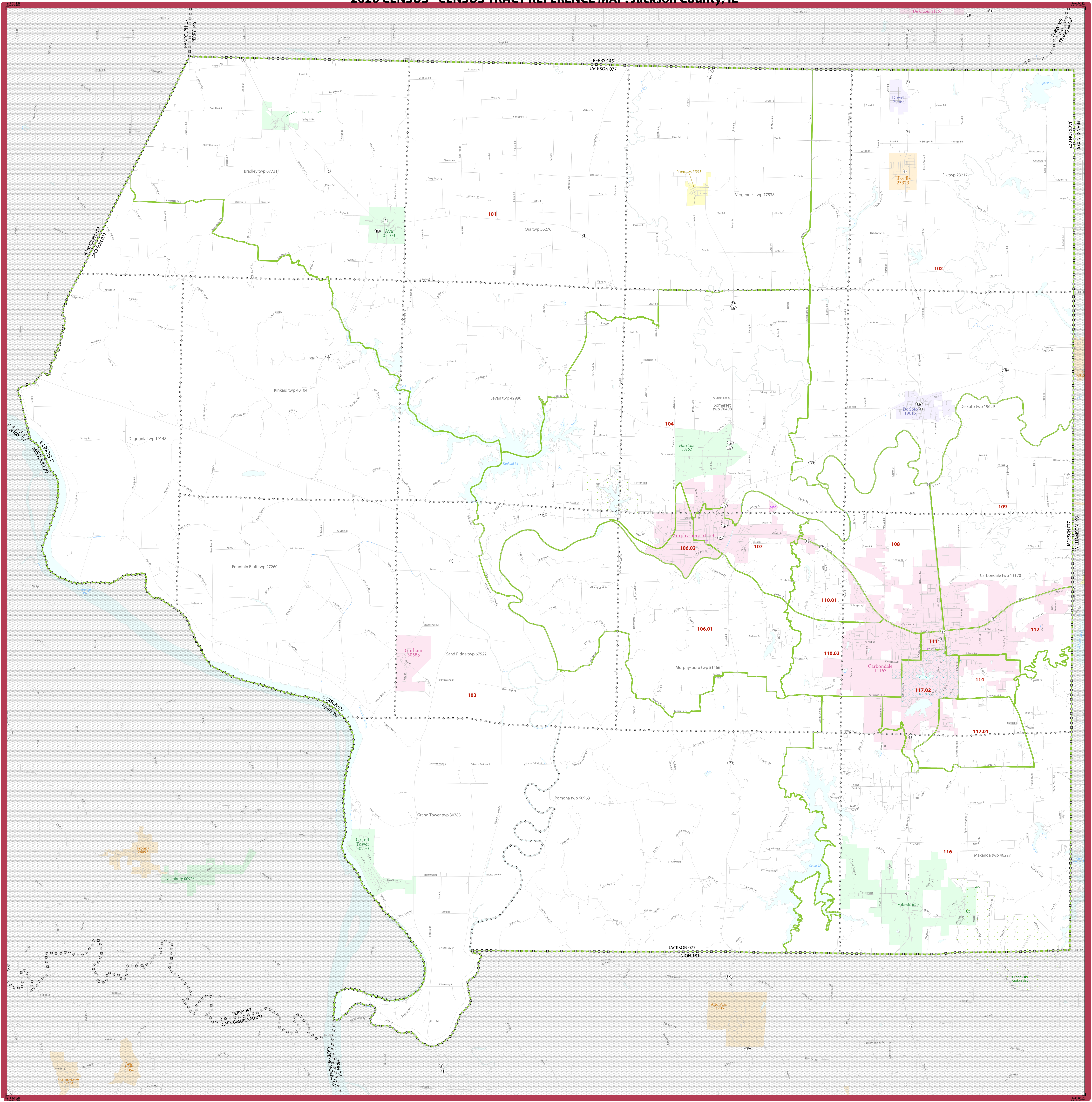


2020 CENSUS - CENSUS TRACT REFERENCE MAP: Jackson County, IL



LEGEND

SYMBOL DESCRIPTION	SYMBOL	LABEL STYLE	SYMBOL DESCRIPTION	SYMBOL	LABEL STYLE	
International	☆☆☆☆	CANADA	Incorporated Place 1,2	Yellow/Green	Davis 18100	
Federal American Indian Reservation	Red Dotted	L'ANSE RESVN 1880	Census Designated Place (CDP) 2	Yellow/Blue	Incline Village 35100	
Oil/Reservoir Trust Land	Blue Dotted	TI880	Census Tract 3	Red	33.07	
State American Indian Reservation	Green Dotted	Tama Resvn 9400	DESCRIPTION <td>SYMBOL <td>DESCRIPTION <td>SYMBOL</td> </td></td>	SYMBOL <td>DESCRIPTION <td>SYMBOL</td> </td>	DESCRIPTION <td>SYMBOL</td>	SYMBOL
Alaska Native Regional Corporation	Blue Dotted	NANA ANRC 52120	Water Body	Blue	Interstate or U.S. Highway	Blue with 2 lines
State (or statistically equivalent entity)	Blue Dotted	NEW YORK 36	College or University	Blue with 2 lines	State Highway or State Road	Blue with 1 line
Minor Civil Division (MCD) 1	Blue Dotted	ERIE 029	Military	Blue with 2 lines	Other Road	Blue with 1 line
Census County Division (CCD), Census Subarea (CSA), or Unincorporated Territory (UT)	Blue Dotted	Bristol town 07485	Prison or Juvenile Detention Center	Blue with 2 lines	4WD Trail, Stairway, Also: Walkway or Ferry	Blue with 1 line
Consolidated City	Blue Dotted	Hanna CCD 91650	Navigable Boundary or Feature Not Elsewhere Classified	Blue with 1 line	Other Road	Blue with 1 line
		MILLFORD 47500	Inset Area	Blue with 1 line		

Where international, state, county, and/or MCD/CCD boundaries coincide, the map shows the boundary symbol for only the highest-ranking of these boundaries.

Geographic area names are followed by other their FIPS or census code.

1. A "*" following an MCD name denotes a false MCD. A "*" following a place name indicates that a false MCD exists with the same name and FIPS code as the place; the false MCD label is not shown.

2. Place label color corresponds to the place fill color.

3. Census tracts are identified by an up to four-digit integer number and may have an optional two-digit suffix; for example 23 or 1457.02. The census tract codes consist of six digits with an implied decimal between the fourth and fifth digit corresponding to the basic census tract number, but with leading zeros, and trailing zeros for census tracts without a suffix. The tract number examples above would have codes of 002300 and 145702, respectively.

Due to space limitations, some road names, along with other feature and geography names on the map, may not be shown.

All legal boundaries and names are as of January 1, 2020. The boundaries shown on this map are for Census Bureau statistical data collection and tabulation purposes only; their depiction and designation for statistical purposes does not constitute a determination of jurisdictional authority or rights of ownership or entitlement.

Geographic Vintage: 2020 Census (reference date: January 1, 2020)
 Data Source: U.S. Census Bureau's MAJ/TIGER database (TAR20)
 Map Created by: Geography Division, January 06, 2021

Projection: Albers Equal Area Conic
 Datum: NAD 83
 Spheroid: GRS 80
 1st Standard Parallel: 37 53 35
 2nd Standard Parallel: 41 35 07
 Central Meridian: -89 18 43
 Latitude of Projection Origin: 36 54 12
 False Easting: 0
 False Northing: 0

Scale: 1:150,000
 The printed map scale is 1:150,000

Sheet 1 of 1 PARENT sheets
 Total Sheets: 1 (Index 0; Parent 1; Inset 0)

NAME: Jackson County (077)
 ENTITY TYPE: County or statistically equivalent entity
 ST: Illinois (17)

2020 CENSUS TRACT REF MAP (PARENT)
 Sheet ID: 24951707001

U.S. DEPARTMENT OF COMMERCE U.S. Census Bureau

United States Census 2020