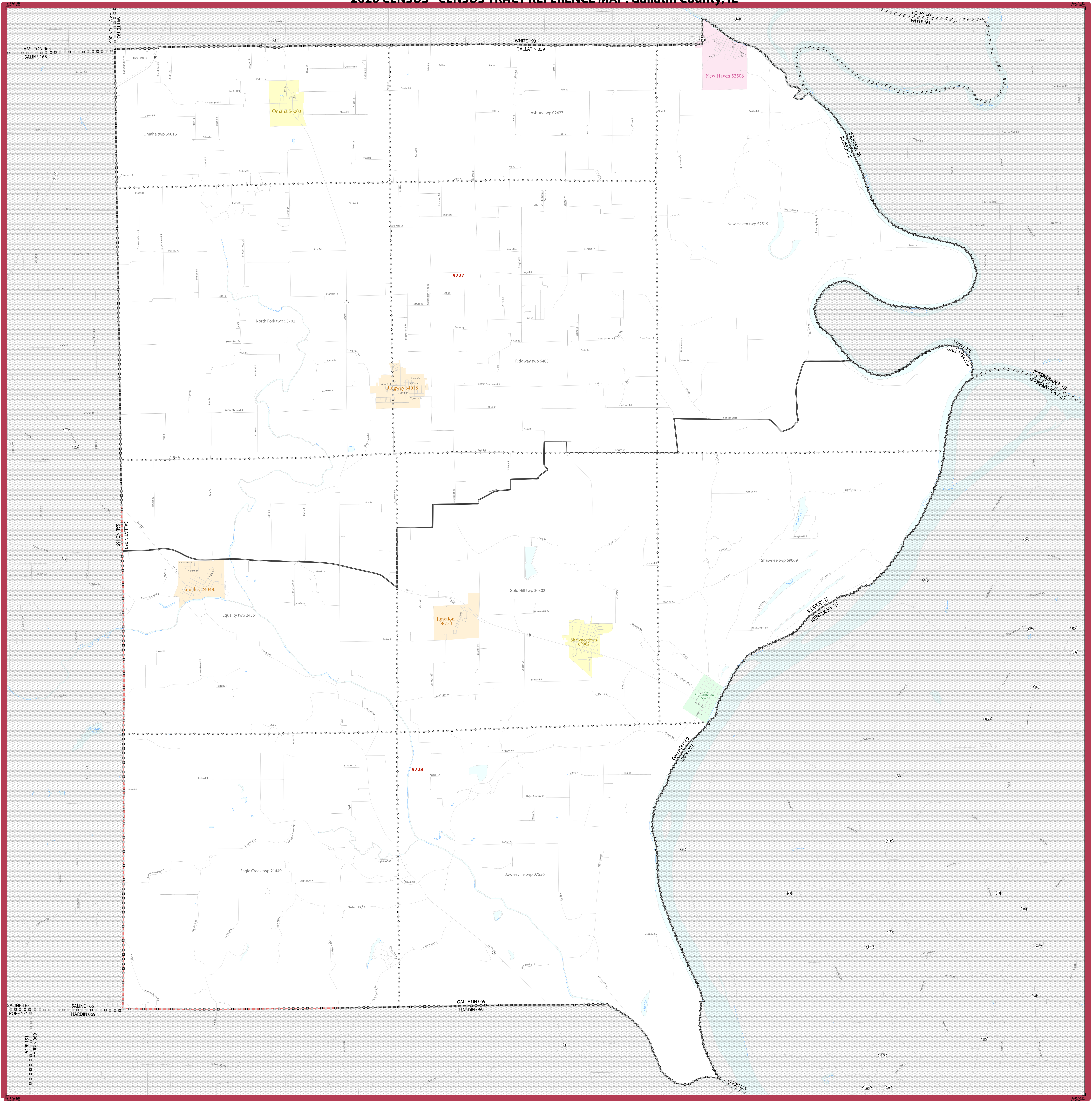


# 2020 CENSUS - CENSUS TRACT REFERENCE MAP: Gallatin County, IL



SYMBOL DESCRIPTION	SYMBOL	LABEL STYLE	SYMBOL DESCRIPTION	SYMBOL	LABEL STYLE
International	◆◆◆◆◆◆◆◆	CANADA	Incorporated Place 1,2	■ ■ ■ ■ ■ ■	Davis 18100
Federal American Indian Reservation	■ ■ ■ ■ ■ ■ ■ ■	L'ANSE RESVN 1880	Census Designated Place (CDP) 2	■ ■ ■ ■ ■ ■	Incline Village 35100
Oil Reservation Trust Land	■ ■ ■ ■ ■ ■ ■ ■	TI880	Census Tract 3	■ ■ ■ ■ ■ ■	33.07
State American Indian Reservation	■ ■ ■ ■ ■ ■ ■ ■	Tama Resvn 9400	DESCRIPTION	SYMBOL	DESCRIPTION
Alaska Native Regional Corporation	■ ■ ■ ■ ■ ■ ■ ■	NANA ANRC 52120	Water Body	■ ■ ■ ■ ■ ■	Placeholder Lake
State (or statistically equivalent entity)	■ ■ ■ ■ ■ ■	NEW YORK 36	College or University	■ ■ ■ ■ ■ ■	Placeholder
County (or statistically equivalent entity)	■ ■ ■ ■ ■ ■	ERIE 029	Minor Civil Division (MCD) 1	■ ■ ■ ■ ■ ■	Placeholder
Minor Civil Division (MCD) 1	■ ■ ■ ■ ■ ■	Bristol town 07485	Prison or Juvenile Detention Center	■ ■ ■ ■ ■ ■	Placeholder
Census County Division (CCD), Census Subarea (CSA), or Unincorporated Territory (UT)	■ ■ ■ ■ ■ ■	Hanna CCD 91650	Navigable Boundary or Feature Not Elsewhere Classified	■ ■ ■ ■ ■ ■	Placeholder
Consolidated City	■ ■ ■ ■ ■ ■	MILFORD 47500	Inset Area	■ ■ ■ ■ ■ ■	A1

Where international, state, county, and/or MCD/CD boundaries coincide, the map shows the boundary symbol for only the highest-ranking of these boundaries.

Geographic area names are followed by other their FIPS or census code.

1. A " " following an MCD name denotes a false MCD. A " " following a place name indicates that a false MCD exists with the same name and FIPS code as the place; the false MCD label is not shown.

2. Place label color corresponds to the place fill color.

3. Census tracts are identified by an up to four-digit integer number and may have an optional two-digit suffix for example 23 or 1457.02. The census tract codes consist of six digits with an implied decimal between the fourth and fifth digit corresponding to the basic census tract number, but with leading zeros, and trailing zeros for census tracts without a suffix. The tract number examples above would have codes of 002300 and 145702, respectively.

Due to space limitations, some road names, along with other feature and geography names on the map, may not be shown.

All legal boundaries and names are as of January 1, 2020. The boundaries shown on this map are for Census Bureau statistical data collection and tabulation purposes only; their depiction and designation for statistical purposes does not constitute a determination of jurisdictional authority or rights of ownership or entitlement.

Geographic Vintage: 2020 Census (reference date: January 1, 2020)  
 Data Source: U.S. Census Bureau's MAJ/TIGER database (TAR20)  
 Map Created by: Geography Division, January 06, 2021

Projection: Albers Equal Area Conic  
 Datum: NAD 83  
 Spheroid: GRS 80  
 1st Standard Parallel: 37 53 37  
 2nd Standard Parallel: 41 35 57  
 Central Meridian: -89 18 43  
 Latitude of Projection Origin: 36 54 12  
 False Easting: 0  
 False Northing: 0

Scale: 1:145,718

Sheet 1 of 1 PARENT sheets  
 Total Sheets: 1 (Index 0; Parent 1; Inset 0)

NAME: Gallatin County (059)  
 ENTITY TYPE: County or statistically equivalent entity  
 ST: Illinois (17)

2020 CENSUS TRACT REF MAP (PARENT)  
 Sheet ID: 249517009001

United States Census 2020